



1150 Montreal Ave St Paul MN – Highland Park Area

Class A Office / Retail / Medical - FOR LEASE

Property Highlights

- Built in 2006 - 14ft ceilings with modern build-out (formerly a real estate office.)
- Abundant light and contemporary windows
- Up to 6000 sq ft available
- Rents Starting at \$14.95 NNN
- Tenant improvements are available
- Plentiful Parking
- Current tenants include a successful chiropractor and family dentistry practice
- **Brokers Welcome!!**

Listed By:

Dixon Diebold

ReUrban, LLC

651-343-1889

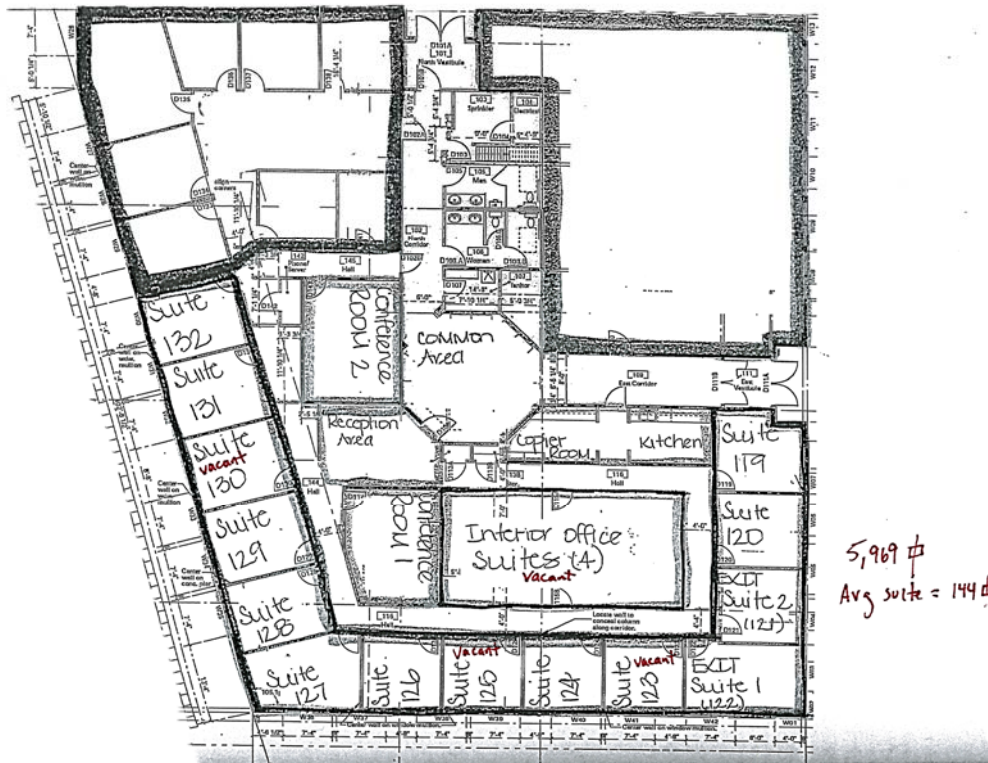
dixon@reurbanrealestate.com



Existing Build Out – New in 2006 – Modern and Efficient!!!



Nearly 6000 sq ft available with the ability to be divided:



For a showing or questions call Dixon @ 651-343-1889 or email dixon@reurbanrealestate.com